



SANDVIK
Coromant

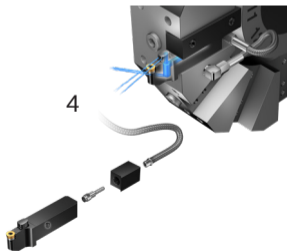
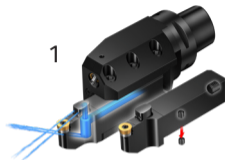
CoroTurn® 107

Round inserts
with rail interface

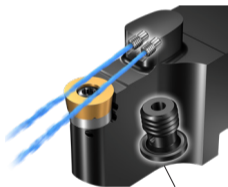
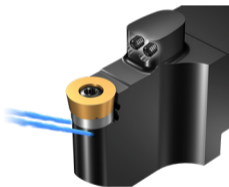
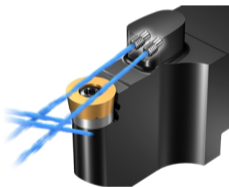
CoroTurn 107[®] - coolant connection

There are four ways to connect the coolant

1. Adaptive item for QS[™]
2. Rear tube connection
3. Front, underneath connection
4. Rear tube connection with a QS-stop
(articles: QS-2020HP 2525HP)



Over and under coolant is the standard set-up.
By plugging the coolant holes you can choose
between using just under or over coolant*

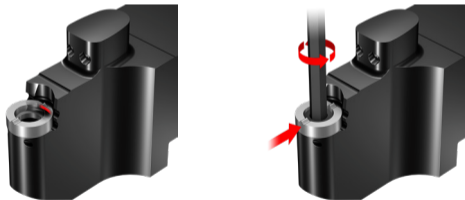


5512 104-03

* Under coolant is only possible
to plug on QS™ shank

Fastening shim

- Ensure that the shim is centered and that the rear end of the shim is in contact with the tool holder.
- Push the shim toward the tool holder and fasten the screw



92066

© Sandvik Coromant 2020-06

SANDVIK
Coromant