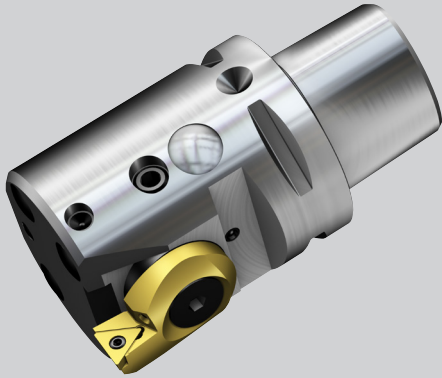


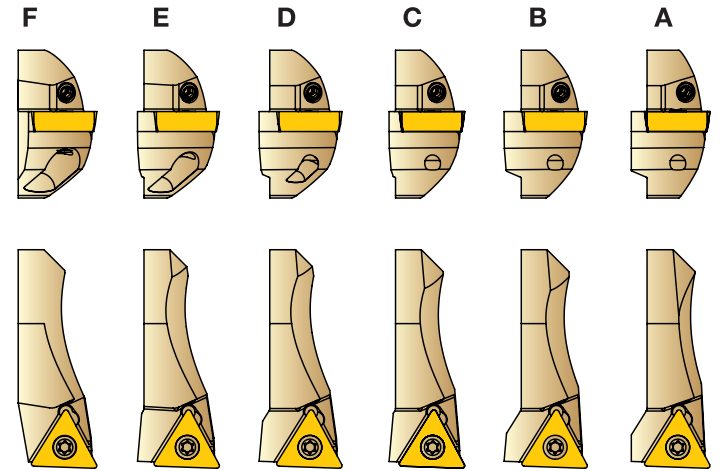
CoroBore® 826 HP



Head office:
 AB Sandvik Coromant
 SE-811 81 Sandviken, Sweden
 www.sandvik.coromant.com
 E-mail: info.coromant@sandvik.com

92710
 © AB Sandvik Coromant
 Rev 15.10, Rev 18.06

| | Ordercode | Included cartridges | F-dimension | |
|------------|--------------|---------------------|--------------------|------|
| Size B set | 826B-4-TC09U | A | R826B-AF17STUC09HP | 7,0 |
| | | B | R826B-BF17STUC09HP | 7,5 |
| | | C | R826B-CF17STUC09HP | 8,0 |
| | | D | R826B-DF17STUC09HP | 8,5 |
| Size C set | 826C-6-TC11U | A | R826C-AF23STUC11HP | 10,0 |
| | | B | R826C-BF23STUC11HP | 10,5 |
| | | C | R826C-CF23STUC11HP | 11,0 |
| | | D | R826C-DF23STUC11HP | 11,5 |
| | | E | R826C-EF23STUC11HP | 12,0 |
| | | F | R826C-FF23STUC11HP | 12,5 |



CoroBore 826 HP Torque values

| (A) | | Nm | ft/lbs |
|----------------------|--|-----|--------|
| Ø mm (inch) | | | |
| 36-55 (1.417-2.165) | | 3.0 | 2.2 |
| 56-154 (2.205-6.063) | | 6.0 | 4.4 |

| (B) | ANSI | Nm | ft/lbs |
|------|------------|-----|--------|
| TC09 | TC1.8(1.5) | 0.8 | 0.59 |
| TC11 | TC22 | 0.9 | 0.66 |

| (C) | | Nm | ft/lbs |
|----------------------|--|-----|--------|
| Ø mm (inch) | | | |
| 36-55 (1.417-2.165) | | 4.0 | 2.95 |
| 56-154 (2.205-6.063) | | 8.0 | 5.9 |

Picture

1. Lock cartridge (**table A**) and insert (**table B**) with correct torque value, check table.
2. Unlock locking screw before adjusting diameter.
3. Always adjust small to large to avoid backlash. Don't exceed max limits!
- 3ab. Each click, diameter adjusts 0.002 mm (0.00008 inch)
 360° turn, diameter change by 0.1 mm (0.00394 inch).
 Adjustment range:
 CB826B-cartridge (36-55 mm (1.417-3.583 inch)): Nominal diameter +/- 0.55 mm (0.022 inch)
 CB826C-cartridge (56-91 mm (3.662-6.063 inch)): Nominal diameter +/- 0.65 mm (0.026 inch)
4. Tighten locking screw with correct torque, check (**table C**).
5. To lubricate tool, depress centre and fill with oil (acid free light machine oil)

