

SANDVIK
Coromant

CoroTurn® 300

Insert change

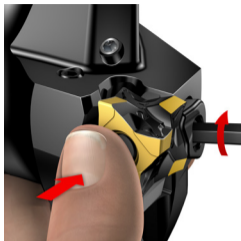
1



3



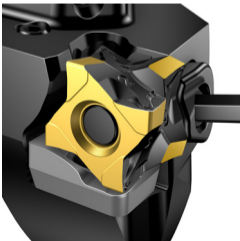
5



2



4

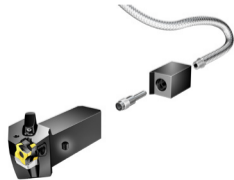
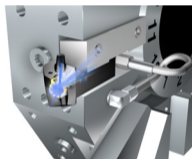
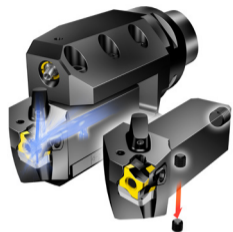


www.sandvik.coromant.com/coroturn300

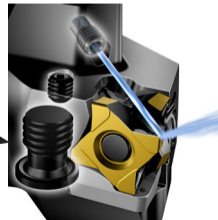
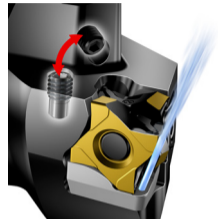
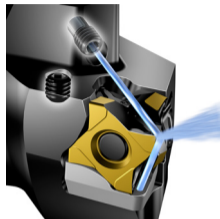
Head office:
AB Sandvik Coromant
SE-811 81 Sandviken, Sweden
www.sandvik.coromant.com
E-mail: info.coromant@sandvik.com

92032
© AB Sandvik Coromant 15.06

Coolant connection



Coolant supply



Clamp assembly

